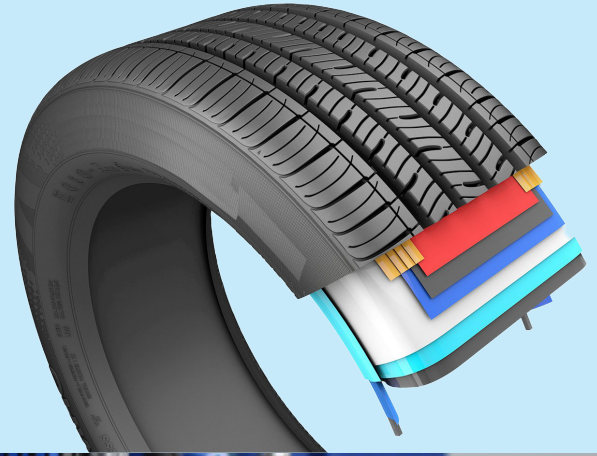


STRIP GAUGE MONITORING SYSTEM

Flexible • Efficient • Automated • Traceable



Small Investments. Big Paybacks.

As we keep pushing tire component manufacturing technology forward older machines are in danger of becoming obsolete. A wide range of equipment upgrade options enable in-service machines to keep pace for a fraction the cost of new machines..

- **Improve Automation:** Cutting labor costs.
- **Speed Changeovers:** Adding manufacturing flexibility.
- **Improve Quality:** Reduce scrap with automated adjustments.
- **Cut Costs:** Less scrap means less material waste.
- **Build Productivity:** Run faster with less downtime.



Mounted between the die head exit and cooling drum entrance, this system uses a single-point laser measurement system that continuously traverses back and forth across the extruded strip to verify the average gauge.

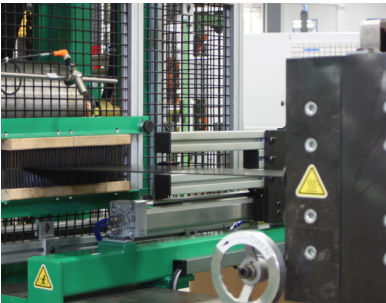
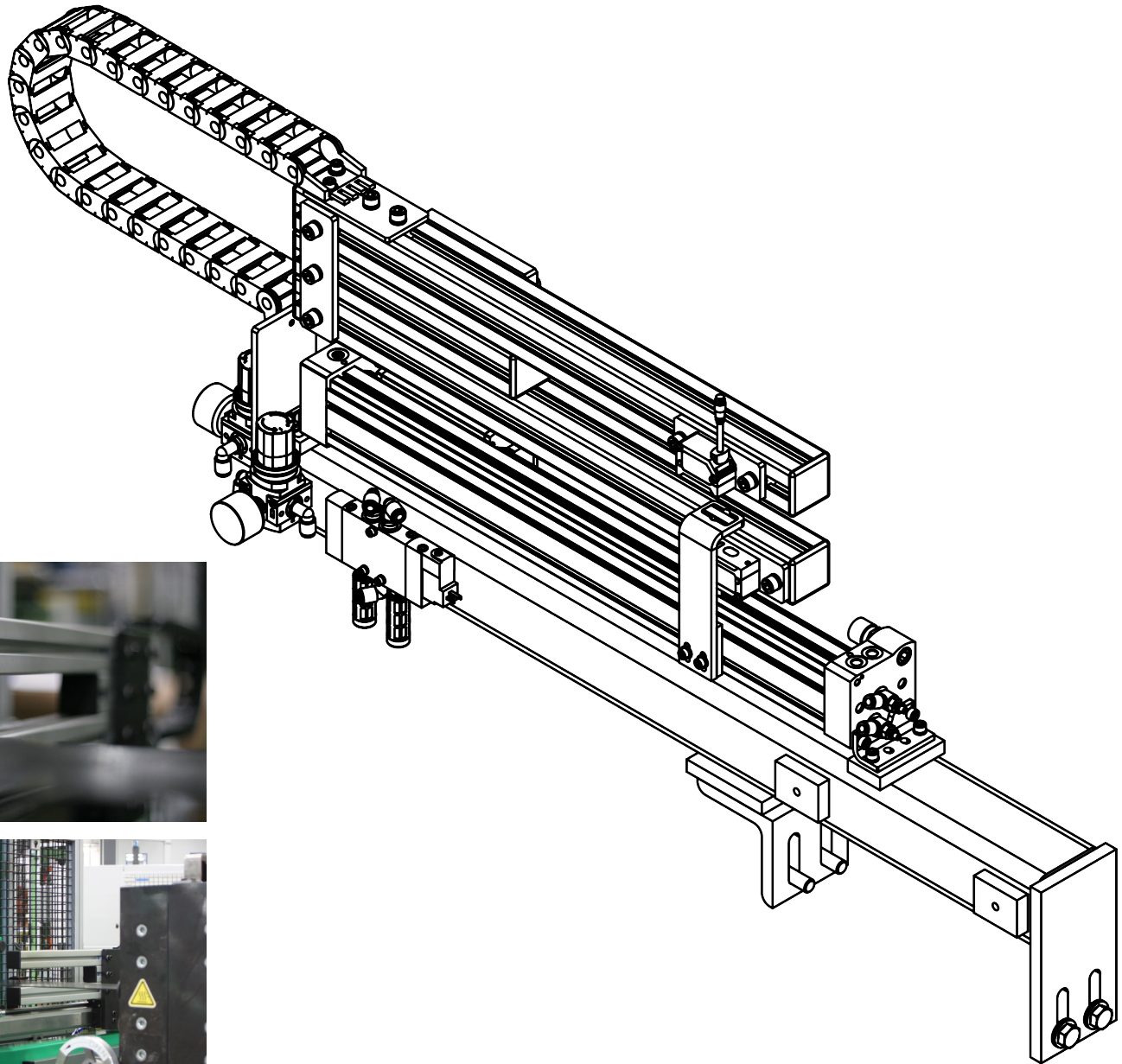
- Continuous inspection of material gauge
- Self-calibrating (No operator intervention)
- Pneumatic or servo-controlled positioning

The system will provide an audible and visual alarm if product is verified to be out of specification.

The interface with an existing PLC is required.



STRIP GAUGE MONITORING SYSTEM



SPECIFICATIONS

Accuracy (rolling average): $\pm 0.005\text{mm}$
Air Consumption: 0.113 cfm or 3.19 l/min
Power Requirements: 24VDC, 0.25A
